

Digital Cabinets

Roll-Through Refrigerator 1600 lt - 2 door

ITEM # _____

MODEL # _____

NAME # _____

SIS # _____

AIA # _____


726497 (R116R2FT)

 Roll-Through Refrigerator
 1600 lt - 2 door- 230
 V/1N/50Hz

Short Form Specification

Item No.

External and internal in AISI 304 stainless steel. Body insulation thickness mm75. N. 1 full door each side with heated frame. Built-in refrigeration unit; ventilated operating mode; digital control; automatic defrost; external digital temperature display. Operating temperature +2/+10°C. For ambient temperatures up to 43 °C. CFC and HCFC free. R134a gas in refrigeration circuit. Gas in foam: Cyclopentane.

Main Features

- Two full doors.
- The operating temperature can be adjusted from +2 to +10°C to suit both meat and dairy storage requirements.
- Simple control panel: on/off switch, high/low humidity switch and digital temperature display.
- Automatic defrost and automatic evaporation of defrost water.
- Ventilated cooling for optimal temperature distribution.
- Simple cooling unit easily accessible from the rear of the appliance.
- Universal shock-protectors on all sides.
- Complies with main international certification bodies and is CE marked.
- Plug-in installation: 1 phase, 220/240V supply.
- Connectivity ready for real time access to connected appliances from remote and data monitoring (requires optional accessory).

Construction

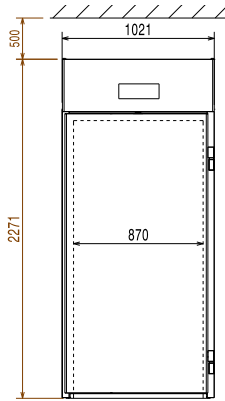
- Built-in compressor to suit operating conditions.
- Interior cell and external panel are constructed in 304 AISI stainless steel.
- 75 mm thick insulation, with cyclopentane injection for long-term insulation and energy saving.
- Refrigerant type: R134a.
- Developed and produced in ISO 9001 and ISO 14001 certified factory.
- Finished in top quality materials to ensure durability.
- CFC and HCFC free (ecological refrigerant type: R134a, - gas in foam: cyclopentane).

Optional Accessories

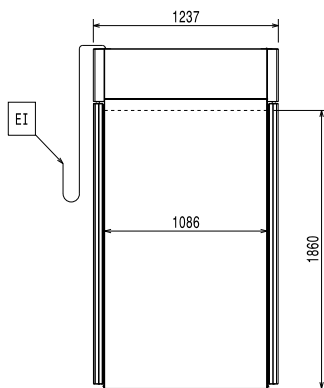
- Kit with 2 hinges for door reversibility PNC 881432
- Roll-in rack for 2/1 GN grids PNC 881449
- Trolley for 20x2/1GN roll-in rack PNC 922134
- Base for 20x2/1GN roll-in rack PNC 922142
- 60mm pitch roll-in rack for 20x2/1GN PNC 922204
- 80mm pitch roll-in rack for 20x2/1GN PNC 922206

APPROVAL: _____

Front

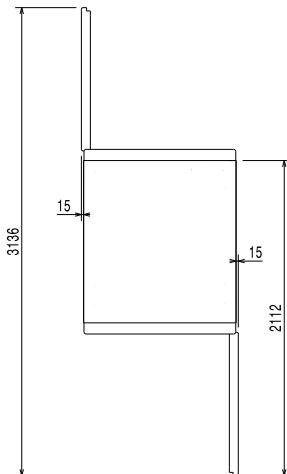


Side



EI = Electrical inlet (power)

Top



Electric

Supply voltage:

726497 (R116R2FT)

230 V/1 ph/50 Hz

Key Information:

Door hinges: 1 Left+1 Right

Built-in Compressor and Refrigeration Unit

External dimensions, Width: 1021 mm

External dimensions, Height: 2271 mm

Number and type of doors: 2 Full

External side panels: 304 AISI

External top panels: 304 AISI

External door material: 304 AISI

Internal panels material: 304 AISI

Refrigeration Data

Compressor power: 3/8 hp

Refrigerant type: R134a

Refrigeration power: 546 W

Refrigerant weight: 340 g

Operating temperature min.: 2 °C

Operating temperature max.: 10 °C